



**REGIONAL SPECIALISED METEOROLOGICAL CENTRE-TROPICAL CYCLONES, NEW DELHI  
TROPICAL WEATHER OUTLOOK**

**DEMS-RSMC TROPICAL CYCLONES NEW DELHI DATED 05.12.2024**

**TROPICAL WEATHER OUTLOOK FOR THE NORTH INDIAN OCEAN (THE BAY OF BENGAL AND THE ARABIAN SEA) VALID FOR THE NEXT 168 HOURS ISSUED AT 0600 UTC OF 05.12.2024 BASED ON 0300 UTC OF 05.12.2024.**

**BAY OF BENGAL:**

Scattered low and medium clouds with embedded intense to very intense convection lay over southeast Bay of Bengal and south Andaman Sea. Scattered low and medium clouds with embedded isolated moderate to intense convection lay over east-central Bay of Bengal, southwest Bay of Bengal and north Andaman Sea.

**\*PROBABILITY OF CYCLOGENESIS (FORMATION OF DEPRESSION) DURING NEXT 168 HRS:**

24 HOURS	24-48 HOURS	48-72 HOURS	72-96 HOURS	96-120 HOURS	120-144 HOURS	144-168 HOURS
NIL	NIL	NIL	NIL	NIL	NIL	NIL

**\*NOTE: EVERY 24HR FORECAST IS VALID UPTO 0300 UTC (0830 IST) OF NEXT DAY**

**ARABIAN SEA:**

Yesterday's Low-Pressure Area over east-central & adjoining southeast Arabian sea has become less marked at 0000 UTC of the 05<sup>th</sup> December over the same region. However, the associated cyclonic circulation over the same region extends up to 4.5 km above mean sea level tilting southwestwards with height.

Scattered low and medium clouds with embedded intense to very intense convection lay over central and southeast Arabian Sea. Scattered low and medium clouds with embedded isolated weak to moderate convection lay over rest Arabian Sea, Lakshadweep Island Area, Maldives & Comorin Area.

**\*PROBABILITY OF CYCLOGENESIS (FORMATION OF DEPRESSION) DURING NEXT 168 HRS:**

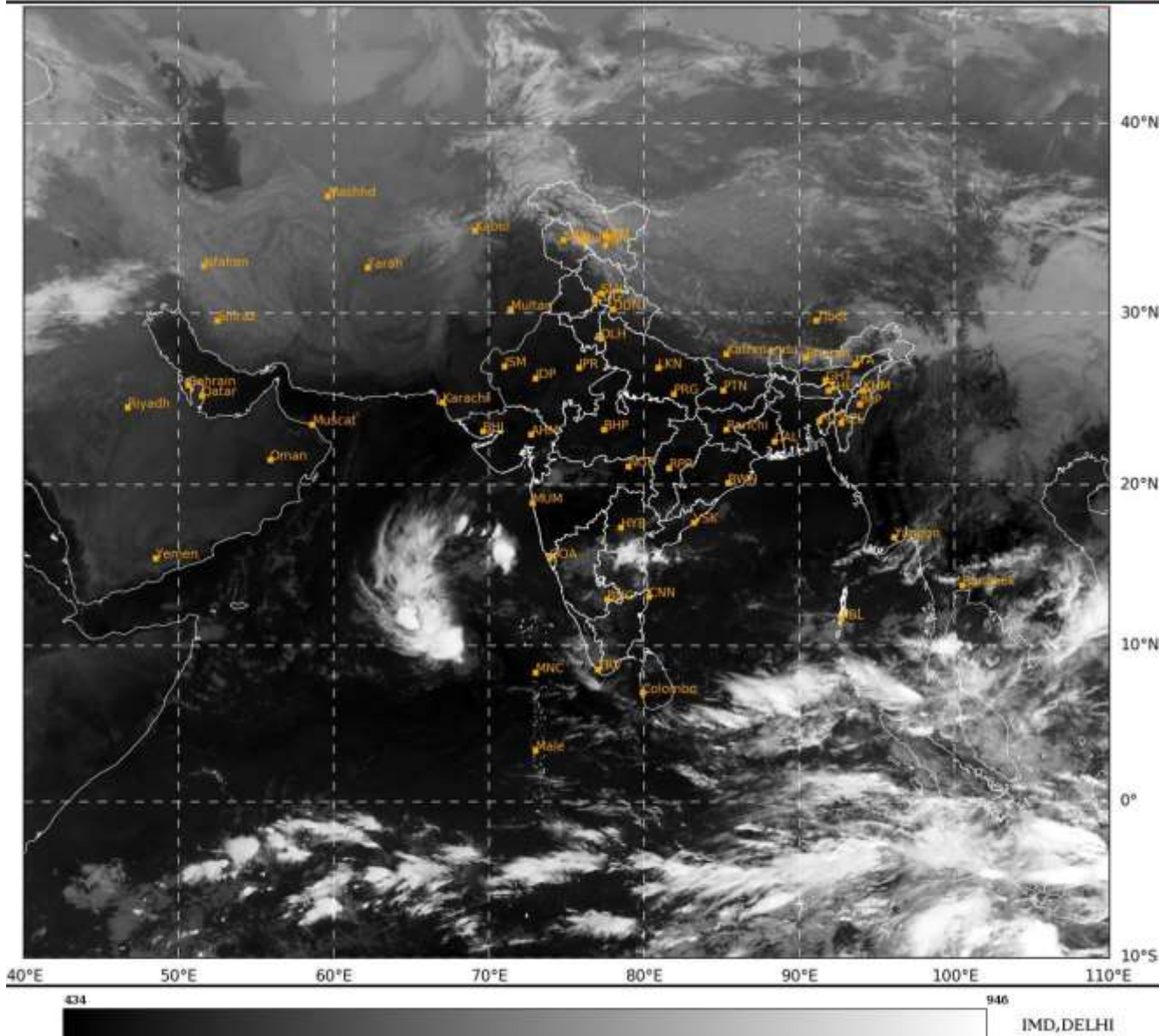
24 HOURS	24-48 HOURS	48-72 HOURS	72-96 HOURS	96-120 HOURS	120-144 HOURS	144-168 HOURS
NIL	NIL	NIL	NIL	NIL	NIL	NIL

**\*NOTE: EVERY 24HR FORECAST IS VALID UPTO 0300 UTC (0830 IST) OF NEXT DAY**

**REMARKS: NIL**

SAT : INSAT-3DR IMG  
IMG\_TIR1 10.8 um  
LIC Mercator

05-12-2024/(0415 to 0442) GMT  
05-12-2024/(0945 to 1012) IST



Cloud distribution: (a) Isolated: <25%, Scattered:25-50%, Broken: 51-75%, Solid:>75%, Convection Intensity: (a) Weak: Cloud Top Temperature (CTT) >-25°C, (b) Moderate: CTT: - 25°C to -40°C, (c) Intense: CTT: - 41°C to -70°C and (d) Very Intense: : Less than -70°C  
PROBABILITY OF CYCLOGENESIS (FORMATION OF DEPRESSION):NIL: 0%, LOW: 1-33%, , MODERATE: 34-66% AND HIGH: 67-100%  
This is a guidance Bulletin for WMO/ESCAP Panel Member countries. Visit respective National websites for Country specific Bulletins